

Vectra[®]

for Cats

Over 9 lbs

Effective monthly control of:

• Adult fleas • Flea eggs • Flea larvae • Flea pupae

- ▼ Kills fleas within 6 hours on cats
- ▼ Kills fleas that may transmit disease, including bartonellosis, tapeworm and tularemia
- ▼ Kills fleas that may cause flea allergy dermatitis and anemia
- ▼ Convenient topical treatment with patented applicator tip
- ▼ Quick drying, non-greasy

AVAILABLE FROM LICENSED VETERINARIANS

ACTIVE INGREDIENTS:

Dinotefuran.....	22.00 %
Pyriproxyfen	3.00 %
OTHER INGREDIENTS	75.00 %
TOTAL	100.00 %

KEEP OUT OF REACH OF CHILDREN

WARNING

For additional information, contact us at
1-800-999-0297 or contact.us@ceva.com

Read entire label before each use

FIRST AID	
If in eyes:	Hold eye open and rinse slowly and gently with water for 15-20 minutes. Remove contact lenses, if present, after the first 5 minutes, then continue rinsing. Call a poison control center or doctor for treatment advice.
If swallowed:	Call a poison control center or doctor immediately for treatment advice. Have the person sip a glass of water if able to swallow. Do not induce vomiting unless told to do so by a poison control center or doctor. Do not give anything by mouth to an unconscious person.
If on skin or clothing:	Take off contaminated clothing. Rinse skin immediately with plenty of water for 15-20 minutes. Call a poison control center, doctor, or 1-800-999-0297 immediately for treatment advice.
Have the product container or label with you when calling a poison control center or doctor or going for treatment. You may contact 1-800-999-0297 for emergency medical treatment information.	

PRECAUTIONARY STATEMENTS

HAZARDS TO HUMANS:

WARNING: Causes substantial but temporary eye injury. Do not get in eyes or on clothing. Avoid contact with skin. Wash thoroughly with soap and water after handling and before eating, drinking, chewing gum, using tobacco, or using the toilet. Remove and wash contaminated clothing before reuse.

HAZARDS TO DOMESTIC ANIMALS:

For external use only on cats over 9 lbs and over 8 weeks of age.

Do not use this product on debilitated, aged, medicated, pregnant or nursing cats or cats known to be sensitive to pesticide products without first consulting a veterinarian.

SIDE EFFECTS:

Monitor your cat after application. Individual sensitivity, such as slight transitory redness, erythema, scratching, pruritus or other signs of discomfort at the site of application may occur after using ANY pesticide product for cats. If signs of sensitivity occur, bathe your cat with mild soap or shampoo and rinse with large amounts of water. If signs of individual animal sensitivity occur and persist, contact your veterinarian. Gastrointestinal signs such as vomiting or diarrhea have also been reported. If these or other side effects occur, consult your veterinarian or call us at 1-800-999-0297. Have the product container or label with you when calling your veterinarian for advice.

Datamatrix code (5mm x 5mm)
requires 5mm of clearance
on all sides (total of 15mm x 15mm)



7/8" / 22.225 mm

1" / 25.4 mm

1" / 25.4 mm

1" / 25.4 mm

1" / 25.4 mm

1" / 25.4 mm

1" / 25.4 mm

1" / 25.4 mm

1" / 25.4 mm

8-7/8" / 225.425 mm

DIRECTIONS FOR USE

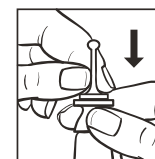
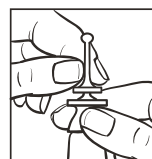
It is a violation of Federal law to use this product in a manner inconsistent with its labeling.

RESTRICTIONS:

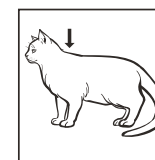
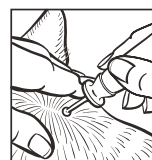
- FOR EXTERNAL USE ONLY.
- Do not have contact or allow children to have contact with treated areas until treatment is completely dry.
- Do not apply more than one tube per treatment.
- Do not allow children to apply this product.
- Use only on cats.
- Do not allow your cat to ingest this product.

HOW TO APPLY:

1. Ensure your cat is dry before applying the product, and ensure your cat remains dry for 24 hours after application. The cat should be standing or in a comfortable position for easy application.
2. Remove the applicator tube from the package.
3. Holding the applicator tube upright, pointing away from you and your cat's face, place your thumb and index finger around the applicator tip under the large disk. With the other hand, grasp the stem of the applicator tip above the small disk. Press down firmly on the small disk until both disks meet, piercing the seal. (See Illustration)



4. Part the hair down to the level of the skin and slowly apply the product at the base of the cat's head until the applicator tube is completely empty, as shown in the diagram below. Avoid superficial application to the animal's hair. Do not get the product in your cat's eyes or mouth.



5. Discard empty applicator tube as outlined in the Storage and Disposal section.
6. Repeat every month or as recommended by your veterinarian.
7. For optimal treatment, control and prevention of adult fleas, flea eggs, flea larvae and flea pupae, year-round monthly application is recommended.

STORAGE AND DISPOSAL

Do not contaminate water, food or feed by storage and disposal.

Pesticide Storage: Store in a cool, dry place. Protect from freezing.

Pesticide Disposal and Container Disposal: Non-refillable container. Do not reuse or refill this container. **If empty:** Place in trash or offer for recycling, if available. **If partially filled:** call your local solid waste agency for disposal instructions. Never place unused product down any indoor or outdoor drain.

LIMITED WARRANTY AND LIMITATION OF DAMAGES

Seller warrants that the material conforms to the chemical parameters of the US EPA registration and the label. Seller makes no warranty, express or implied, other than indicated on the label or as required by applicable law. Buyer and user assume all risk of use and handling of this material when such use and handling are contrary to the label directions. To the extent consistent with applicable law, any damages arising from a breach of Seller's warranties shall be limited to direct damages and shall not include consequential damages such as loss of profit or diminution in value.

Satisfaction Guaranteed
Ceva Animal Health, LLC will provide
new product or your money back.



EPA Reg. No. 83399-9 EPA Est. No. 91645-FL-1

Manufactured for: Ceva Animal Health, LLC, 8735 Rosehill Road, Lenexa, KS 66215
D73970B 08-A1-v1 701037

Vectra[®] and Vectra logo are registered trademarks of Ceva Animal Health, LLC.



©2020 Ceva Animal Health, LLC